



▶ Our Collaborative
PATH to
Regional
WELLNESS



From left are David Corso, BDCH Chief Operations Officer; Nadine Allen, BDCH Director of Quality; Kim Miller, FACHE, BDCH President & CEO; Colette Smith, BDCH Director of Inpatient Nursing; and Dr. Daniel La Voie, BDCH Hospitalist Program Medical Director.

At the 'Top' of Our Game

BDCH Earns Top Rural Hospital Award for Second Consecutive Year; Still the Only Wisconsin Hospital to be Recognized by The Leapfrog Group for Quality, Safety

Earning the Top Rural Hospital Award from The Leapfrog Group in 2014 was quite an honor for Beaver Dam Community Hospitals, Inc. The prestigious distinction validated the tremendous amount of work and commitment the organization put in, from the Board of Directors and Executive Leadership, to physicians, employees and volunteers.

Winning the award for the second consecutive year in 2015 was further affirmation that our

dedication to delivering high-quality care and exceptional patient safety proved excellence was not only attainable, but sustainable through hard work, thorough planning and strategic allocation of resources.

The Top Rural Hospital Award is an elite distinction given to hospitals nationwide for demonstrating excellence in hospital safety and quality through the Leapfrog Hospital Survey. BDCH is the first and only rural community hospital in



▶ "Beaver Dam Community Hospital is working diligently to help make the Dodge County region the healthiest in the state while also ensuring our patients, residents and children have access to safe, high-quality care when they need it. To be recognized for the second year in a row is a testament to the commitment and dedication of the BDCH Medical Staff and providers, our employees and volunteers, and our partners in the community. Working together, we have been able to provide our region with the safe and high-quality care they deserve."

- Kim Miller, FACHE
BDCH President and CEO



▶ "It's a great feeling knowing the BDCH Medical Staff can look at each and every one of our patients in the eye and comfort them with the fact that not only are they being treated by advanced physicians in a state-of-the-art surgery center, they are being cared for by an organization with a proven track record of patient safety. I'm continually impressed with our organizational focus on patient safety and quality."

- Dr. Bert Callahan, MD
BDCH Chief of Staff



▶ "Leapfrog's Top Hospital award is widely acknowledged as one of the most prestigious distinctions any hospital can achieve in the United States... By achieving Top Hospital status, Beaver Dam Community Hospital has proven it prioritizes the safety of its patients, is committed to transparency and provides exemplary care for families and patients in its region. I congratulate the board, staff, and clinicians of Beaver Dam Community Hospital whose efforts achieved these results."

- Leah Binder
President and CEO, The Leapfrog Group

Wisconsin to receive this distinguished award, which was announced at Leapfrog's Annual Meeting and Top Hospital Awards on Dec. 1, 2015 in Washington, D.C.

BDCH was one of 98 Top Hospitals recognized nationally by The Leapfrog Group, including:

- 24 Top Rural Hospitals
- 62 Top Urban Hospitals
- 12 Top Children's Hospitals

The selection is based on the results of The Leapfrog Group's annual hospital survey, which measures hospitals' performance on patient safety and quality, focusing on three critical areas of

hospital care: how patients fare, resource use and management structures established to prevent errors. Performance across many areas of hospital care is considered in establishing the qualifications for the award, including survival rates for high-risk procedures and a hospital's ability to prevent medication errors.

Thanks to the commitment to these critical areas, **BDCH has also earned 'A' grades for patient safety three consecutive years by The Leapfrog Group.**

THE LEAPFROG GROUP
TOP RURAL HOSPITAL 2015
Two Years in a Row!

Our Collaborative Path to Regional Wellness



As health care continues to evolve, so too does the role health care providers are expected to perform within the communities they serve.

Health care systems like Beaver Dam Community Hospitals, Inc. that offer a full continuum of services have a responsibility to not only provide advanced care to those who need it, but to serve as leaders in population health. BDCH embraces this role, and as a non-profit voice for the residents, patients and children of our region, is committed to building upon

the successes of the past by delivering results for our future.

For the last several years, BDCH has shown that through vision, planning, and hard work, it is possible to not only survive the ever-changing health care landscape, but to thrive as well. By proactively addressing new challenges with innovative solutions and an eye on the future, BDCH is well positioned financially and operationally to help forge a new era of health and wellness in our region.

Minimally Invasive Robot-Assisted Surgery is the next piece of state-of-the-art technology BDCH will be bringing to the region. Already a major part of BDCH's short-term plan, the arrival of robot-assisted surgery has been accelerated thanks to a \$1M donation by a local family.



As we prepare for the opportunities ahead, we sharpen our focus on three main elements: Quality and Patient Safety, Population Health and Improved Efficiency. Woven together intricately, they form the fabric of our regional health care system and the support system for our community well-being.

Our laser focus on quality and safety improvement over the last decade has delivered marked progress each year, and 2015 was no exception. Under the Centers for Medicare & Medicaid Service's new Value-Based Purchasing metric, for example, BDCH was rewarded for its excellence in health care outcomes.

For the second consecutive year, BDCH was also nationally recognized by The Leapfrog Group by earning Top Rural Hospital honors for demonstrating excellence in hospital safety and quality. The only Wisconsin hospital to ever earn this award, we are especially proud of this achievement and the fact our region's residents can entrust their care to one of the country's safest and highest-quality hospitals.

▶ **"Working together, we have the opportunity to transform our health and wellness for generations to come."**

Our dedication to expanding services so patients can stay close to home and receive the advanced treatment they need also continued in 2015. Ongoing technology advancements were highlighted by the addition of state-of-the-art Tomosynthesis (3D Mammography), and we introduced new orthopedic options, including minimally invasive knee replacements and thread carpal tunnel release. Addressing the changing needs of our residents, we added programs assisting in Advance Care Planning and the growing epidemic of prediabetes.

We have ensured patients have access to the highest-quality physicians, providers and staff as well as the most state-of-the-art technology when medical treatment is necessary. But we've also been

working closely with community stakeholders

to find ways to help promote overall community well-being, emphasizing prevention, physical activity and healthy living as a means of supporting people on their individual journeys of wellness.


On this front, we are incredibly excited for what 2016 has to offer as we work toward implementing the Blue Zones Project® in our region! Working together, using evidence-based strategies to help make the healthy choices the easy choices, we have the opportunity to transform our health and wellness for future generations.

The kind of collaboration that will be pivotal to making the Blue Zones Project® a success is also at the heart of what makes BDCH a great place to work and receive care. We are blessed with a visionary Board of Directors committed to providing our region with a spirit of leadership that is attentive to its needs and ensures the availability of the very best in health care.

The BDCH Executive team, inspired by our Board, works closely with our physicians, providers, staff and volunteers to create a culture of patient safety, quality and efficiency unrivaled among Wisconsin's rural hospitals. Your input has also been invaluable as patient feedback, community surveys and personal one-on-one conversations help shape our priorities and guide our processes in our never-ending quest for improvement.

Each and every day we are grateful you entrust the care of yourself and your loved ones with us, and it is a responsibility we both cherish and take very seriously. We look forward to another year of collaboration, partnership and growth as we aspire to the greatest heights of quality patient care, safety and regional wellness.

Yours in health,


Kim Miller, FACHE
President and CEO

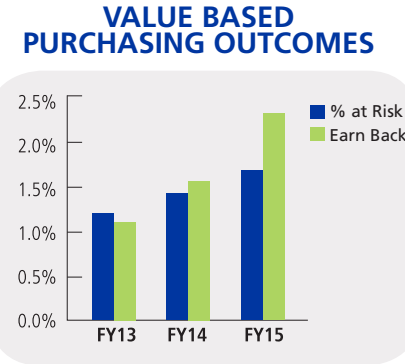
Quality

Dedicated to Patient Safety, Positive Outcomes

At Beaver Dam Community Hospital, providing the patients of our region with the safest, highest quality care is our top priority. This is one reason BDCH is so proud to have received the prestigious Top Rural Hospital Award from The Leapfrog Group (Page 2) for the second consecutive year in 2015.

We are also proud of the laser focus our physicians, providers and staff have had on not only maintaining our high levels of patient safety and quality, but in improving them as well. Previously used quality composite scores by the Centers for Medicare and Medicaid Services (CMS) reflected that dedication, as BDCH continually improved every year between 2007 and 2014, with a high of 97.43 percent in 2014.

CMS has now moved to Value-Based Purchasing as a way to measure, report and reward excellence in health care outcomes. The idea is to improve health care quality by linking Medicare's payments to hospitals to the quality of care that is provided. BDCH has also excelled under this system.



In fiscal year 2015, hospitals faced a loss of up to 1.75 percent of Medicare payments for low quality scores. **BDCH, meanwhile, not only earned back the entire 1.75 percent through high quality, but was awarded an additional .64 percent!**

We attribute this achievement to our dedicated providers and staff, who are committed to continuously tracking, measuring and evaluating clinical quality measures, implementing improved quality initiatives and strengthening the foundation of quality and safety that has been built at BDCH.



BDCH is accredited by the Joint Commission, the College of American Pathologists and the American College of Radiology. Hillside Home Care and Hospice is also accredited by the Joint Commission.

BDCH Earns 'A' for Patient Safety For Third Consecutive Year

THE LEAPFROG GROUP

In 2015, BDCH was one of only 12 Wisconsin hospitals to earn an 'A' grade from the Leapfrog Group, which rates how well hospitals protect patients from accidents, errors, injuries and infections. It was the third consecutive year BDCH earned an 'A'.

Developed under the guidance of Leapfrog's Blue Ribbon Expert Panel, the grading system uses 28 measures of publicly available hospital safety data to produce a single A, B, C, D, or F score, representing a hospital's overall capacity to keep patients safe from preventable harm.



Wellness Starts from Within

BDCH Recognized as an AHA Fit-Friendly Worksite

One way Beaver Dam Community Hospitals, Inc. (BDCH) is committed to improving the health and well-being of our region is by supporting each individual's personal journey of wellness.

This commitment begins inside the walls of BDCH with our own employee wellness program. Over the years, our program has grown exponentially, and now features a dedicated Wellness Committee, internal fitness classes such as yoga, meditation and zumba, an employee wellness newsletter and ongoing efforts to improve the amounts of healthy selections offered in our BDCH Café.

This hard work has not gone unnoticed. After another successful campaign in 2015, BDCH was recognized as a Platinum Level Fit-Friendly Worksite by the American Heart Association.



Linda Klinger, PT

Employee **WELLNESS**, through a focus on physical activity and mental **WELL-BEING**, are high priorities at Beaver Dam Community Hospital. We were honored and excited to be recognized by the American Heart Association and we're **COMMITTED** to providing the best workplace environment possible.

- Mel Bruins, BDCH Chief Talent Officer



Community Wellness

Blue Zones Project® Highlights Commitment to Regional Health

Beaver Dam Community Hospitals, Inc. uses a two-pronged approach when it comes to serving the needs of our region's residents.

First, BDCH works with community stakeholders to find ways to help promote overall community well-being, emphasizing prevention, physical activity and healthy living as a means of supporting people on their individual journeys of wellness.

Second, we commit to offering the highest-quality physicians, providers and staff as well as the most state-of-the-art technology to care for people during those times treatment becomes necessary.

Over the past several years, BDCH has made community health a top priority, and the goal of BDCH President & CEO Kim Miller is to make the Dodge County region the healthiest in the Wisconsin. After forming the Healthy Communities, Healthy Lives initiative in 2014, BDCH took things a step further in 2015, partnering with Healthways and the Blue Zones Project® to see if we could make our region the first Blue Zones community in Wisconsin.

An assessment of Beaver Dam, Horicon, Juneau and Mayville was completed at the end of the year, and each community was deemed ready and engaged enough to begin the multi-year Blue Zones Project®. While project funding is still being secured, it is hoped the initiative can begin as early as 2016.

How Can the Blue Zones Project® Help?

Instead of focusing on the individual, The Blue Zones Project® focuses on the culture, community and environment, developing support systems and implementing evidence-based strategies that help make the healthy choices, the easy choices.

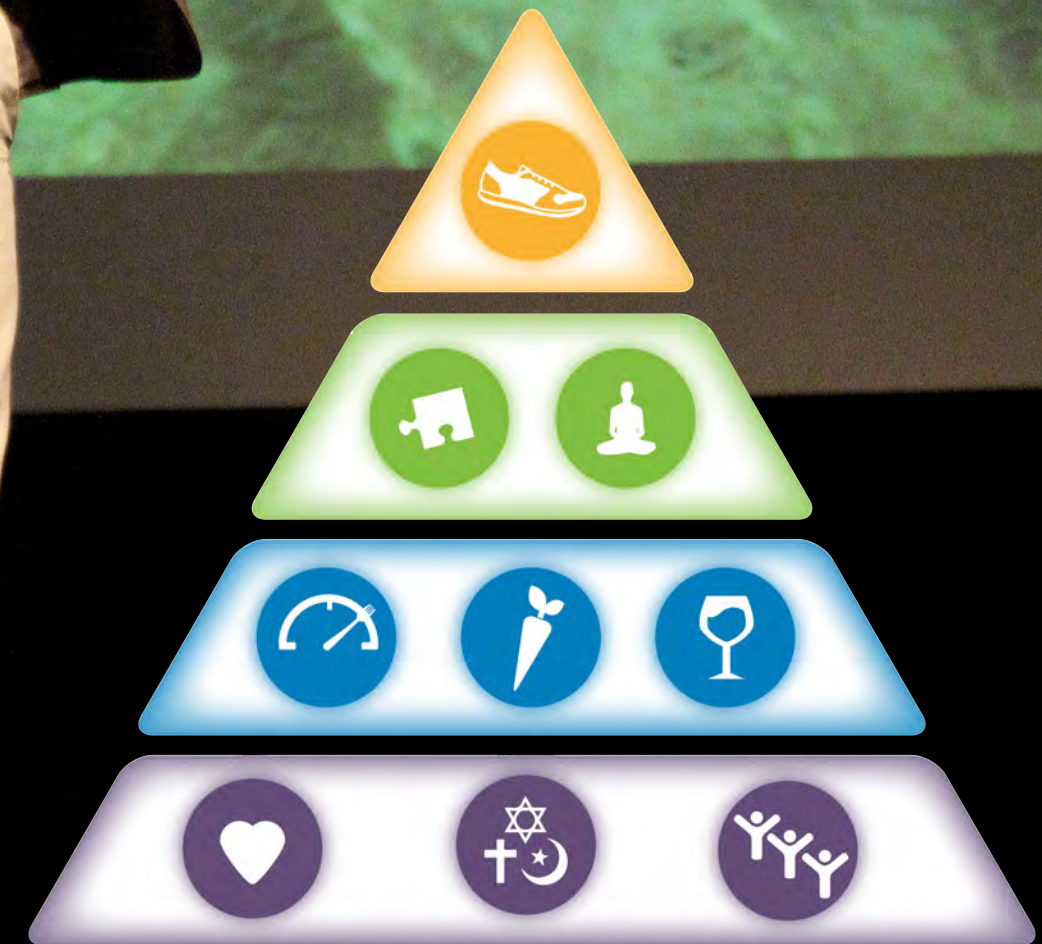
Blue Zones brings in a diverse group of health and wellness experts from around the country, and along with local volunteers, creates a collective consciousness of well-being. This collaboration brings the community's individual efforts together, moving everybody in the same direction, working toward the mutual goal of improved health and wellness.

The Blue Zones Project® is completely voluntary, and all initiatives would be free to those willing to participate.

Tony Buettner and the Blue Zones Project® are ready to work with our region.



Blue Zones Power 9®



Power 9® is a registered trademark of Blue Zones, LLC. All rights reserved.



▶ Jen Shepard, APNP,
BDCH Hospitalist Program

Process Improvement

Maximizing Value, Minimizing Waste, Improving Care

Beaver Dam Community Hospital's process improvement journey generated a lot of momentum in 2015.

Although BDCH has been committed to improved quality and process improvement for many years, the Lean-driven BDCH Improvement System has now been implemented for two years, and gains in efficiency and reductions in waste are plentiful.

BDCH has been widely recognized for its high-quality care and impressive safety scores (see page 6), and continuing advancements in process improvement are critical to the organization's goal of elevating quality of care further. As CMS reimbursements for patient care are increasingly tied to quality, this also has an effect on our financial health.

In 2015, BDCH continued its series of rapid improvement events (RIEs), which examine the current state of each process we're looking to improve in order to gain insights, identify hurdles or road blocks and set targets for improvement. Utilizing Lean concepts help us keep patient care at the forefront while promoting care delivery in a more efficient and effective manner.

In addition to improving efficiencies, RIEs help improve teamwork and cohesiveness as physicians and staff from different backgrounds and departments come together to develop solutions to process roadblocks.

This past year, 32 RIEs were conducted, involving 212 employees and participants and more than 20 departments. Each focused on improving the delivery of services needed by our region's residents.

Some highlights include:

- A February 2015 RIE worked on reducing hospital readmissions within 30 days of discharge for patients suffering from chronic lung disease. This work resulted in a 43 percent drop in readmissions.



▶ From left are BDCH Process Improvement Facilitators Richard Born, Martha Lewke and Kristin Kastein. Not pictured is Diane Moore.

- The BDCH Community Care program was streamlined, reducing the application process from 6 hours to 5 minutes (See page 16).

BDCH is expanding its Improvement System reach even further in 2016, adding more value streams and involving more departments to ensure process improvement is experienced by every employee.

Enhanced Services

Growing to Meet Your Needs

As the needs of our region's residents change, so does the scope and breadth of the services offered by Beaver Dam Community Hospital. Some areas of growth come about by an opportunity to add improved state-of-the-art technology to current service lines. Others are new service lines altogether, introduced to serve needs previously unmet.

In the past year, BDCH has developed a Prediabetes class to offer recently diagnosed patients with a critical resource, created a support group for Parkinson's Disease and other neurological ailments, hosted workshops for those living with chronic conditions, and much more.

BDCH constantly assesses our region's needs and was happy to also offer the following services and technologies in 2015:

► "I'm very **impressed** by the level of technology available at BDCH. Tomosynthesis is a **great** addition to the breast health program."

- Crystal Boling

Tomosynthesis – 3D Mammography

Breast tomosynthesis, or 3D mammography, is the next generation of digital mammography. State-of-the-art three-dimensional imaging provides clearer images, increased cancer detection rates and decreased false positives. In fact, tomosynthesis has been shown to detect lethal cancers 41 percent better than standard mammography, while reducing recall rates by 15 percent.

By showing radiologists images in three dimensions, tomosynthesis reduces the masking effects of tissue density by reducing tissue overlap, providing more accurate readings. This allows for more precise indications of size, shape and location of abnormalities, and can also improve the likelihood of identifying multiple tumors, which occur in 15 percent of breast cancer patients.

Thread Carpal Tunnel Release

In 2015, Rheumatologist Dr. Daniel Malone introduced an innovative alternative treatment for carpal tunnel syndrome that achieves the same result as traditional surgical procedures, but with reduced pain, cost and recovery time.

The Thread Carpal Tunnel Release is a minimally invasive, ultrasound-guided procedure that utilizes a specially designed flexible thread to cut through the fibrous band in the wrist that causes carpal tunnel syndrome. Local anesthetic is used, and only two tiny needle punctures are needed. There is no incision, so patients

► Crystal Boling, left, with Melissa Schuett, RN, BDCH Breast Health & Cancer Nurse Navigator, was one of the first patients to utilize BDCH's new 3D Mammography.



► From left are BDCH Pharmacists Thomas Gerin, Nathan Reabe and Erin Farrell.

Expanded Orthopedics

In 2015, BDCH welcomed Dr. Joseph Puccinelli to the BDCH Orthopedics & Sports Medicine Clinic. Dr. Puccinelli, an orthopedic surgeon honored as a Milwaukee Magazine Top Doctor in 2015, fortified the already excellent care provided by orthopedic surgeon Dr. Bert C. Callahan, and brought minimally invasive knee replacement to BDCH.

feel minimal discomfort with fewer complications compared to traditional treatment involving surgical incisions.

BDCH Pharmacy

BDCH expanded its full continuum of care to include pharmacy services with its acquisition of Marshland Pharmacy's Vita Park location in November 2015. Located on the first floor of the Vita Park Medical Building, BDCH Pharmacy continues to offer the high-level services our region's residents are accustomed to, including convenient home delivery.

Advanced Care Planning

BDCH's free Advanced Care Planning Services help people and their families make important health decisions and plan for issues that may arise during medical emergencies or end-of-life scenarios. Making the individual's wishes known well in advance can help reduce family stress and burden, allowing family and friends to focus on what's really important during these difficult times.

The BDCH Orthopedics & Sports Medicine Clinic also expanded its breadth of service by adding the diagnosis and treatment of spinal conditions in order to decrease pain and increase quality of life.



National Awards

BDCH Receives Many Honors for Excellence



▶ Erik Meyer, PT

Beaver Dam Community Hospital's commitment to patient safety and quality across our entire continuum led to another award-winning year in 2015! Although achieving national recognition as a top-flight hospital is gratifying, it pales in comparison to the acknowledgment that we are fulfilling our mission of delivering excellence to every patient, resident and child, every day.



▶ **HOMECARE ELITE**
In November, Hillside Home Care learned it had earned HomeCare Elite status for the ninth time in the past 10 years. Hillside had also previously received a 4.5-star rating from Medicare over the summer.



▶ **EXCELLENCE IN ACTION**
BDCH Remembrance Home, a residential facility designed specifically to meet the unique needs of those with Alzheimer's Disease and other related forms of dementia, won the "Excellence in Action" Award from the National Research Corporation for the third consecutive year. This honor recognizes long-term care and senior-living organizations that achieve the highest levels of satisfaction excellence.



▶ **OUTCOMES EXCELLENCE**
In August, the BDCH Rehab and Wellness Department was honored with the Outcomes Excellence Award by Focus on Therapeutic Outcomes (FOTO). This award is given for exceeding national benchmarks for expected improvement in functional performance for four consecutive quarters.



▶ **MASTER OF THE AMERICAN COLLEGE OF PHYSICIANS**
In spring, Dr. Sharon L. Haase of the BDCH Medical Staff was honored as a Master of the American College of Physicians, a very prestigious honor. Dr. Haase is only the 22nd Wisconsin physician to receive ACP Mastership, is one of only two living women ACP Masters and is the first physician selected from a rural hospital.



▶ **'A' FOR PATIENT SAFETY**
In the fall, BDCH received an 'A' for patient safety from The Leapfrog Group for the third consecutive year. BDCH was one of only 12 Wisconsin hospitals to earn the highest grade for protecting patients from accidents, errors, injuries and infections.



▶ **TOP RURAL HOSPITAL**
In December, BDCH received the prestigious Top Rural Hospital Award from the Leapfrog Group for the second consecutive year for demonstrating excellence in hospital safety and quality. BDCH is still the first and only Wisconsin rural hospital to earn this award.



▶ **50 RURAL HOSPITAL CEOs TO KNOW**
In January, BDCH President and CEO Kim Miller, FACHE, was named to the '50 Rural Hospital CEOs to Know' list by Becker's Hospital Review.

Strength in Numbers

Disciplined Financial Approach Positions BDCH for Continued Growth and Performance

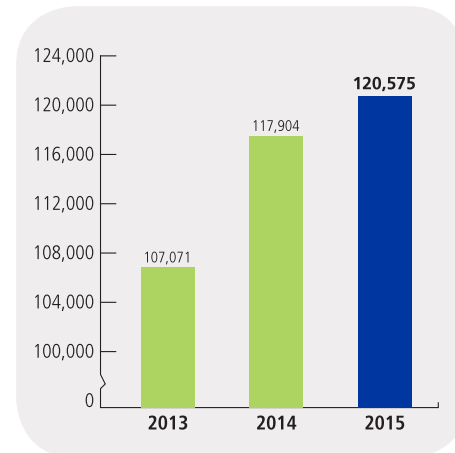
Measured and proactive financial stewardship guided by a visionary approach to the changing landscape of health care led to another successful year for BDCH in fiscal 2015 (July 1, 2014 – June 30, 2015).

This strong financial foundation positions BDCH well to tackle challenges and capitalize upon opportunities that present themselves as needs of our patient population change and CMS reimbursements fluctuate.

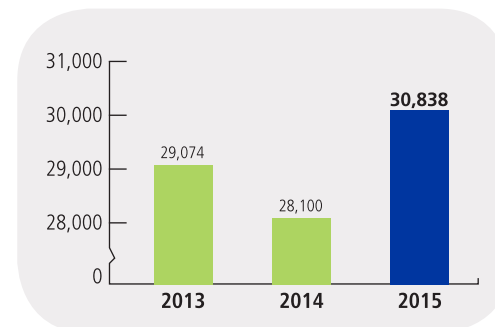
In fiscal year 2015, BDCH served more patients and continued to expand the amount of services we provide the residents of our region (see pages 12-13). We increased our level of Days of Cash on Hand to nearly double the industry standard, and through high safety and quality marks, were able to not only recoup the 1.75 percent potentially withheld by CMS*, but earn an additional .64 percent.

*Through Value Based Purchasing, CMS adjusts Medicare's reimbursements to hospitals based on the quality of care they provide to patients.

OUTPATIENT & CLINIC VISITS



EMERGENCY ROOM VISITS & URGENT CARE



Community Care: Hope and support for those in need

Beaver Dam Community Hospitals, Inc's Community Care program was established to provide help to uninsured patients and their families who require assistance with debts due at BDCH, helping remove some of the worry that can get in the way of peace of mind and a proper recovery.

In the past, BDCH has provided millions of dollars in Community Care to the residents of our region. Toward the end of fiscal year 2015, in an effort to ensure that everyone who qualified was receiving the help they needed, the program was streamlined. BDCH turned an hours-long application process that required assistance from a BDCH financial counselor, into a quick, efficient application that immediately identified those who were qualified.

The results have been striking.

In the six months before streamlining the process, BDCH helped 182 patients, covering \$302,000 in medical costs. In the six months after, more than 10 times the number of patients had been served (1,931), resulting in nearly \$3 million in covered medical costs. The majority of these covered costs will be reflected in BDCH's fiscal year 2016 reports.

Financial & Statistical Overview	2015	2014	2013
Net Patient Revenue	\$ 91,902,096	\$ 92,413,402	\$ 88,115,880
Other Revenue	\$ 7,899,262	\$ 8,541,182	\$ 9,280,662
Total Revenue	\$ 99,801,358	\$ 100,954,584	\$ 97,396,542
Operating Expenses	\$ 93,847,960	\$ 96,955,476	\$ 94,021,691
Income from Operations	\$ 5,953,398	\$ 3,999,108	\$ 3,374,851

Community Service Investments	2015	2014	2013
Loss on Medicaid Patients	\$ 6,640,276	\$ 4,147,884	\$ 5,250,783
Community Care	\$ 894,396	\$ 727,610	\$ 509,865
Church Health Services	\$ 38,496	\$ 212,991	\$ 213,568
Health Education & Community Outreach	\$ 27,411	\$ 53,685	\$ 109,761
Supplies & Equipment Donation	\$ 19,487	\$ 17,867	\$ 22,331
Health Fairs & Community Events	\$ 82,747	\$ 50,788	\$ 59,646
Total	\$ 7,702,813	\$ 5,210,825	\$ 6,165,954
% Community Service \$s to Operating Expenses	8.2%	5.4%	6.6%

“I am so incredibly **GRATEFUL** for BDCH's Community Care Program. I never dreamed this kind of program was available for people like me, but it's one of the best things that has ever happened in my life.

I really can't thank everyone at BDCH enough for the way they treated me, from the financial counselors to the doctors and nurses. The hospitalist physicians and nurses especially went out of their way to make sure I was **COMFORTABLE** and had wonderful bedside manners. The **COMPASSIONATE** care they provided meant the world to me.”

~ Sharon Wolgast, Hustisford

Board of Directors

Ensuring Our Region's Quality Healthcare

"The BDCH Board of Directors is extremely **PROUD** of Beaver Dam Community Hospital's excellent record on patient safety and **QUALITY**. We understand that work in this area is never finished, and we look forward to continuing our **DEDICATION** and commitment to providing the residents of our region with the highest quality health care possible, close to home."



Sue Sutter
Vice Chair; Quality Chair



Karla Chase
BDCH Board Chair

As volunteer members of the BDCH Board of Directors, we take seriously the responsibility of ensuring that the trust each patient, resident and child places in BDCH is rewarded with compassionate, high-quality care.

Modern health care is constantly evolving, which presents many challenges and an abundance of opportunities. Our region's residents can be confident that BDCH's diverse group of dedicated board members has the vision and resolve to guide BDCH to continued growth into the future.

The BDCH Board of Directors is aware how fortunate our region is to have a nationally recognized health care system. Our facilities provide safe, high-quality care and are focused on providing an increasing level of state-of-the-art care, close to home. Thoughtfully crafted and executed strategic plans allow us to bring technologies such as 3D Mammography and Interventional Radiology to our region, allowing our residents to receive critical care without unnecessary travel.

We look forward to strengthening the partnerships we've fostered with BDCH Leadership, the BDCH Medical Staff, employees, community leaders, stakeholders and our residents in the coming year.

Yours in good health,
Karla Chase, BDCH Board Chair



Doug Mathison
Treasurer; Finance Chair



Marsha Borling
Secretary



Kim Miller
BDCH President and CEO



Yani Benitez-Rullan



Dr. Bert C. Callahan
Chief of Staff



Lisa Davidson



Wade Fletcher
BDCH Foundation President



Terry O'Connor



Jim Kirsh
Past Board Chair

"BDCH owes a debt of **GRATITUDE** to Past Board Chair Jim Kirsh, who selflessly and ably helped navigate the organization during difficult economic times and throughout a changing health care landscape. His tireless **COMMITMENT** to our region's residents was instrumental in BDCH's growth and **DEDICATION** to quality during his tenure. "

- Kim Miller, FACHE, President and CEO



From left are Kim Miller, FACHE, BDCH President & CEO; Cathy Lentz, Lois Sell, Shirley Johnson, Bernie Jeffries, Ramona Ross, Arelly Gonnering, Partners co-president Nancy Steinback, Gail Hope Henschel, Jermaine Sabourin, Partners co-president Arletta Trejo and BDCH Director of Strategy, Marketing & Development Holly Christopherson. In the back are Kim Bresser, BDCH Foundation Manager, Carol Klas, Carolyn Kaul, Jan Sheppard, Laurie Schmidt, Dan Moritz, BDCH Volunteer Manager, John Moser, BDCH Foundation Vice President, and Wade Fletcher, BDCH Foundation President and BDCH Board Member.

Partners: Dedication to Local Health Care

The Partners of Beaver Dam Community Hospital have been a consistent, driving force in the effort to enhance the care and services available at BDCH. Sharing the organization's mission of delivering excellence across a continuum of services, the Partners have been galvanizing allies and poignant ambassadors over their decades of service to our communities.

After being recognized by the Wisconsin Hospital Association with its Wisconsin Award for Volunteer Excellence in 2014, the Partners' tireless contributions continued throughout 2015. Their dedication and commitment to our region resulted in another stellar year managing the BDCH Gift Shop, organizing the popular Craft Fair in support of the BDCH Employees Helping Employees Fund, hosting numerous jewelry, book and cookie sales and bringing the community together for the 26th Annual Tree of Lights Celebration in honor of loved ones cherished and remembered.

The result was another incredibly generous donation benefitting numerous initiatives and programs, including Hillside Hospice, Lifeline, Hillside Manor and more. The Partners' donation of \$70,000 pushes their total amount since 1997 to an incredible \$534,074.08!

Beaver Dam Community Hospitals, Inc. wouldn't be the same without this invaluable group of volunteers. They have earned our respect and admiration, and we thank them for another appreciated year of service!

The Partners' BDCH Craft Fair was another big success in 2015. From left are Partners Ramona Ross and Betty Michael with gift baskets donated by BDCH employees.

BDCH employee Jenny Goss plays the flute in the Partners' annual Tree of Lights Celebration





A Solid Foundation

BDCH Foundation Raises Nearly \$343,000 in 2014-2015

The collaboration between the BDCH Foundation, our region's residents, community leaders, philanthropists, volunteers and more led to another successful annual fund drive as nearly \$343,000 was raised during the 2014-2015 campaign (Oct. 1, 2014 – Sept. 30, 2015), surpassing our goal of \$325,000. In addition, the Foundation received the second half of the generous \$1M pledge for minimally invasive, robot-assisted surgery made by the Gallun family in 2014.

With the changing way hospitals are reimbursed for services, the BDCH Foundation's importance in ensuring our region has the critical health care infrastructure to promote healthier, happier lives and prevent and manage chronic disease will only grow in importance.

In addition to securing advancing technologies like Tomosynthesis (3D Mammography) for use inside the hospital, the BDCH Foundation awards external grants to non-profit organizations for health and wellness programs within the region.

During the BDCH Foundation's last fiscal year, grant awards were provided for the following:

- \$5,224 – Heart Rate Monitors, Horicon and Lomira school districts
- \$5,000 – Church Health Services Portable X-Ray Machine
- \$5,000 – Community Pediatrics, Reach Out and Read Program
- \$1,880 – Dodge County Borrow a Bike Program
- \$1,195 – MedReturn Drug Collection Drop Box at Beaver Dam Police Dept.
- \$1,000 – Beaver Dam Area Community Theatre, "Mothers" One-Act Play (Domestic Violence Awareness)
- \$720 – Senior Exercise and Yoga classes, Reeseville

In addition to these grant awards, the BDCH Foundation also made pledges to support Phase One of the Gold Star Memorial Trail (\$10,000) and the Wayland Academy Community Fitness Outdoor project (\$8,985). Since 2006, the Foundation has also granted a total of \$42,874 for 50 Automatic External Defibrillators, the most recent of which were awarded to the Mayville Police Department and the Watertown Elks Lodge.

The BDCH Foundation is grateful for everyone who has worked to help make the BDCH Foundation a success. Thank you!



John Moser
Vice President



Karla Chase
Secretary



Kim Abel
Treasurer



Kim Miller
BDCH CEO



Elisha Barudin



Denise Fitzsimmons



Keith Ghanian



Dr. Sharon Haase



Gail Hope Henschel



Donna Hutchinson
BDCH CFO



Craig Karmazin



Carolyn Kaul



Brett Reчек



Nancy Steinback



Rhonda Steiner



Arletta Trejo



Wade Fletcher
President

“Seeing first hand, through medical services our family has received, we appreciate the **QUALITY** of care our local hospital provides and the importance of the Foundation's **SUPPORT** in enhancing that care.”

- Doug and Kathy Mathison



▶ Dr. Buswell Cleary

Our BDCH Medical Staff:

Doing Extraordinary Things Every Day

The BDCH Medical Staff comprises primary care and 26 specialties and work across the continuum to provide health care where and when patients need it, day or night, seven days a week.

Our physicians practice in many medical, hospital-based and surgical specialties, and together create a team to support the care for each patient, resident and child.

BDCH Medicine

Physicians in medical specialties provide a wide range of primary and specialty care in the clinic, the hospital, nursing home, and home care and hospice. They are the focal point for helping patients manage complex conditions and chronic diseases.

Cardiology

- Bachhuber, Brian, MD
- Ballantyne, Ford, MD
- Bellissimo, Joseph, MD
- Danahy, Daniel, MD
- Dhingra, Ravi, MD
- DiMusto, Paul, MD
- Dong, Sheng-Jing, MD
- Ewer, Steven, MD
- Goldman, Todd, MD
- Hoffmayer, Kurt, MD
- Hughes, Patrick, MD
- Johnson, Heather, MD
- Jung, Frank, MD
- Kaji, Eugene, MD
- Kelly, Annie, MD
- Kleiber, Benjamin, MD
- Krishna, Jaya L., MD
- Kushner, Jeffrey, MD
- Lee, Peter, MD
- McDonnell, Kelly, DO
- Makkuni, Premraj, MD
- Moncher, Karen, MD
- O'Connor, Anne, MD
- Paten, Taral, MD
- Rawko, Peter, MD
- Riter, Henry, MD
- Saghir, Mohammed, MD
- Stein, James, MD
- Stone, Charles, MD

- Tipnis, Parag, MD
- Wallhaus, Thomas, MD
- Wolff, Matthew, MD
- Zasadil, Mary, MD

Dentistry

- Eaton, John, DDS

Dermatology

- Enz, Sarah, MD
- Passow, Tara, MD

Endocrinology

- Ahmed, Muhammad, MD

Family Medicine

- Allen, Bradley, MD
- Augustson, Michael, MD
- Barudin, Seth, MD
- Performance Improvement Committee Chair, Chief of Staff Elect
- Buswell Cleary, Lindsey, DO
- Ethics Committee Chair & Hillside Home Care, Hospice, and Manor Assistant Medical Director
- DeVries, Jamie, MD
- Lambert, Erin, DO
- Lambert, John, DO
- Lee, JoAnn, MD
- Lucarelli, Melissa, MD
- Miller, Eric, MD
- Newkirk-Thompson, Cristin, MD
- Rentmeester, Timothy, MD

Infectious Disease

- Jean-Louis, Garry, MD

Internal Medicine

- Ifat, Kamin, MD
- Haase, Sharon, MD
- Cardiac and Pulmonary Rehab Medical Director
- Miller, Joel, DO
- Credentials Committee Chair
- Muchow, Amy, MD
- Hillside Home Care, Hospice, and Manor Medical Director

Oncology

- Hei, David, MD
- Kim, Roy, MD
- Lubner, Sam, MD
- McFarland, Thomas, MD
- Raiguru, Saurabh, MD



▶ Dr. Palmer, General Surgery

Neurology

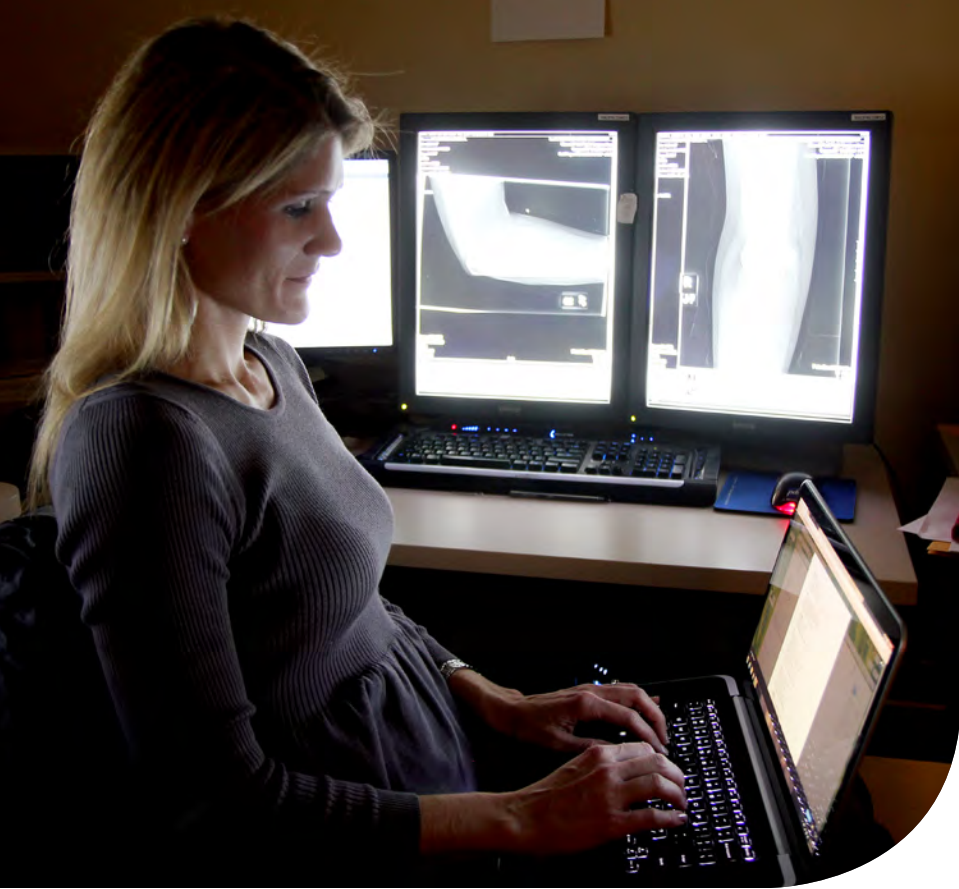
- Bradbury, Edward, MD
- Chacon, Marcus, MD
- Jensen, Matthew, MD
- Luy Tan, Wilson, MD
- Nelson, Jacalyn, MD
- Sattin, Justin, MD
- Schultz, Meredith, MD

Pediatrics

- Miesfeld, Jay, MD
- Miesfeld, Jessica, MD
- Peterson, Betsy, MD



▶ Dr. Gladden, Hospitalist



▶ Dr. Rippl, Radiology Medical Director

Internal Medicine - Hospitalist

- Anaf, Edward, MD
- DeGreve, Anne, DO
- Gladden, Marc, DO
- Guo, Xiaojun, MD
- LaVoie, Daniel, MD
- Ostromecki, Elzbieta, MD
- Suittu, Shefiu, MD
- Trewan, Robert, MD

Pathology

- Ali, Laekha, MD
Pathology Medical Director
- Bertram, Heidi, MD
- Dayer, Anne, MD
- Ferber, David, MD
- Hollister, Winston, MD
- Hryciuk, Jeanne, MD
- Kelley, Scott, MD
- Padurean, Adrian, MD
- Rusch, Susan, MD
- Schulte, Michael, MD

Radiology

- Amoli, Sean, MD
- Basham, Mark, MD
- Beres, Robert, MD
- Bessette, Peter, MD
- Bloomgarden, Daniel, MD
- Breger, Robert, MD
- Cooley, Peter, MD
- Desai, Paresh, MD
- French, Christopher, MD
- Gray, Dana, MD
- Hadjiev, Orlin, MD
- Hallenbeck, Katherine, MD
- Handrich, Stephen, MD
- Hardie, Robert, MD
- Hinke, David, MD



▶ Dr. Dynkowski, Emergency Medicine

Physiatry

- Fowler, William, MD

Rheumatology

- Malone, Daniel, MD
- Wilson, Virginia, MD

Urology

- Hahnfeld, Lynn, MD
- Kozler, Craig, MD
- Manakas, Christopher, MD
- Paolone, David, MD

Hospital-Based Practices

Hospital-based physicians work solely in the hospital, providing inpatient and outpatient care in the emergency department, imaging, surgery, medical-surgical unit, and the laboratory. BDCH partners with three different physician groups to provide these essential services.

Anesthesiology

- Fattouh, Maher, MD
- Goldsmith, Robin, MD

- Keehn, Douglas, DO
- Kelner, Stanislav, MD
- Podojil, Frank, DO
Anesthesia Medical Director
- Zdrzilova, Lucia, MD

Emergency Medicine

- Aldinger, Glenn, MD
- Andreacos, Thanh, MD
- Brin, Michael, DO
- Correa, Laura, DO
- Dynkowski, Gerard, MD
Clinical Care Committee Chair
Medical Staff Secretary/
Treasurer
- Falco, William, MD
- Gundersen, Gunnar, MD
- Hilander, Swen, MD
- Kotal, Eric, MD
- Naples, Jeremiah, MD
- Polglaze, Kevin, DO
- Tovar, Richard, MD
ER Medical Director
Former Chief of Staff
- Tupesis, Janis, MD
- Traktman, Michael, DO

◀ Dr. Wilkins (and family), Ophthalmology



- Hurst, Emil, MD
- Jakubowski, Eric, MD
- Joshi, Jaideep, MD
- Kehoe, Michael, MD
- Krishnan, Megha, MD
- Levin, Jonathan, MD
- Lewis, Tiffany, DO
- Lundeen, Brian, MD
- Mastey, Lynn, MD
- McNally, Madeline, MD
- Minor, Paul, MD
- Olson, David, MD
- Rajkowski, Samuel, MD
- Patel, Shirish, MD
- Rao, V.N., MD
- Rippl, Deidre, MD
Radiology Medical Director
- Salton, Gregory, MD
- Sane, Shekhar, MD
- Schuster, Thomas, MD
- Shah, Hemant, MD
- Spittgerber, Gerald, MD
- Suriyanarayanan, Uma, MD
- Thottakara, Paul, MD
- Walker, James, MD
- Washburn, Zachary, MD
- Wells, Robert, MD
- Wenzel, Mark, MD
- Wichman, Heather, MD

Surgery

BDCH's board-certified surgeons offer a wide range of both innovative and traditional surgical procedures. General and gynecological surgeons utilize advanced minimally-invasive techniques, which reduces risk of infection, blood loss and recovery time.

General Surgery

- Balentine, Courtney, MD
- Cassidy, Scott, MD
- Kennedy, Gregory, MD
- Palmer, Paul, MD
- Randle, Reese, MD
- Wilke, Lee, MD
- Zaman, Jessica, MD

Obstetrics/Gynecology

- Anderson, Mary, MD
- Hansfield, Scott, MD
- Johnson-Keys, Kay, MD
- Keatts, Ami, MD
- Ostermann, Kenneth, MD
- Plementosh, Nicky, MD
- Schowengerdt, Raschelle, MD
- Siomos, Effie, MD
- Warren, Denise, DO

Ophthalmology

- Castillo, Thomas, DO
- Wilkins, Jay, MD

Oral Surgery

- Grote, Mary, DDS

Orthopedics

- Callahan, Bert, MD
Chief-of-Staff
- Dopf, Craig, MD
- Puccinelli, Joseph, MD

Otolaryngology

- Isenberg, Jason, MD
- Yaish, Danny, DO
Sleep Lab Medical Director

Podiatry

- Hansen, Rolf, DPM
- Meier, Molly, DPM (WBO)
- Wisniewski, Jason, DPM (Manor)

Psychology

- Marceil, Joseph, PhD

Vascular Surgery

- Acher, Charles, MD
- Bennett, Kyla, MD
- Hoch, John, MD



707 South University Ave.
 Beaver Dam, WI 53916
www.bdch.com
www.bdchmedicalclinics.com
 Like us on Facebook!

NON PROFIT ORG
 U.S. POSTAGE
 PAID
 BEAVER DAM, WI
 PERMIT NO. 318

Kim Miller, FACHE, CEO

BDCH Executive Team:

Mel Bruins, CTO
 David Corso, COO
 Donna Hutchinson, CFO

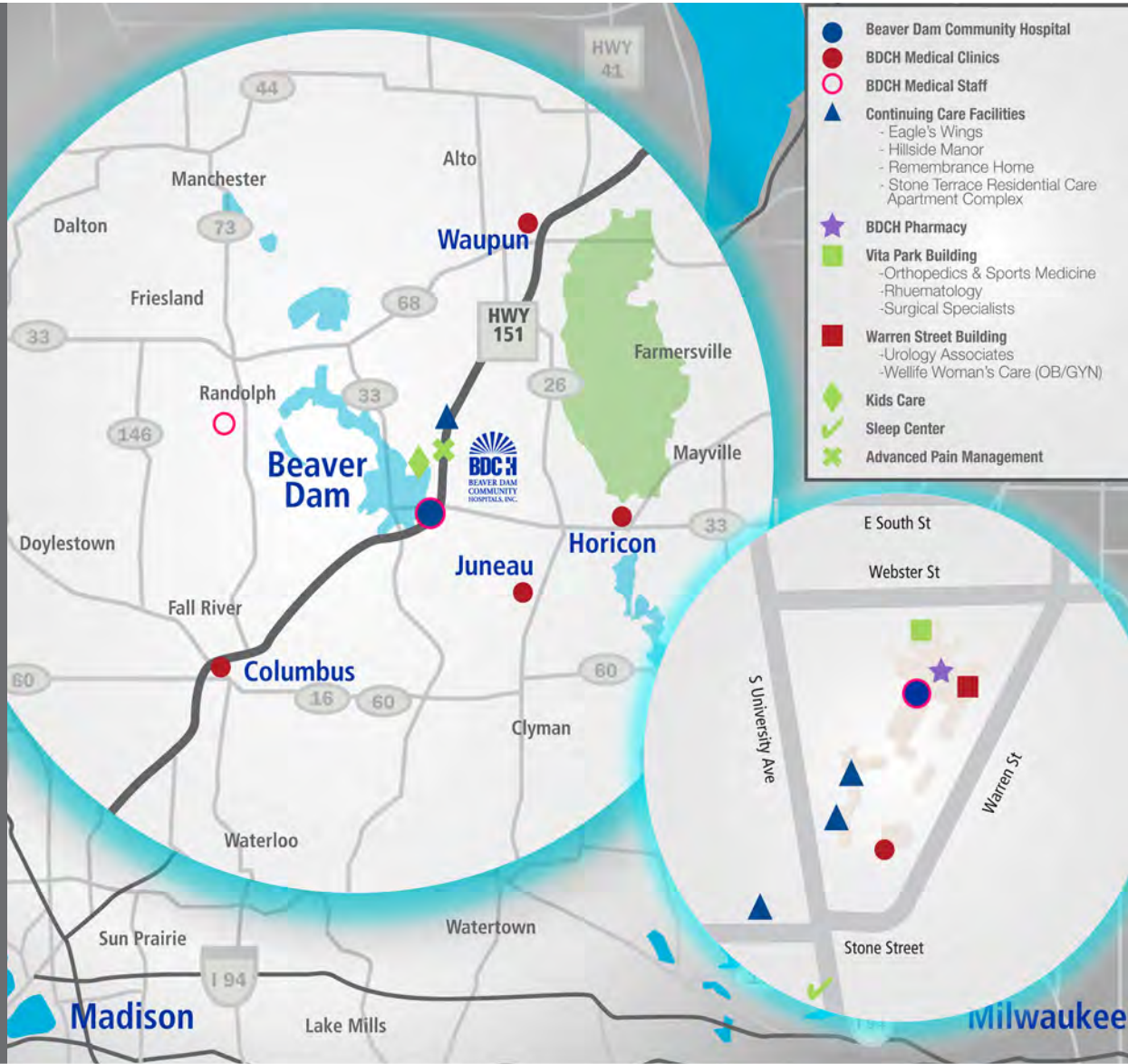
BDCH Directors:

Marge Abegglen - Surgery
 Nadine Allen - Quality
 Don Anderson - Pharmacy
 Kris Behrendt - Kids Care
 Debbie Childress - Finance
 Lydia Creydt - IT
 Jim Feil - Food & Nutrition
 Carol Gentry - Emergency Dept.
 Linda Klinger - Rehab & Wellness
 John Ley - Senior Services
 Jeremy Mason - Materials Mgmt.
 Jessica Muchowski - Wound Care
 Wendy Ostrander - Medical
 Records/Revenue Cycle
 John Pappone - Facilities
 Scott Scheuren - Imaging
 Barb Skaar - Practice Management
 Colette Smith - Inpatient Nursing
 Tricia Weisnicht - Nursing
 Lisa White - Home Care & Hospice
 Kirsten Wild - Compliance

Director of Strategy, Marketing
 and Development,
 Holly Christopherson
 (920) 887-4077

Managing Editor, Dan Baulch
 (920) 887-4152

All contents ©2016 Beaver Dam
 Community Hospitals, Inc.
 Call (920) 887-7181 or visit
 online at www.bdch.com



Collaborating on Wellness

As the regional leader in health care, BDCH is grateful you've entrusted your care to us. We look forward to working closely with you on improving our region's wellness, and making it the healthiest in the state.